



# GAT MONTHLY MEMBERSHIP PROGRESS REPORT

Results as of: 7/31/2021

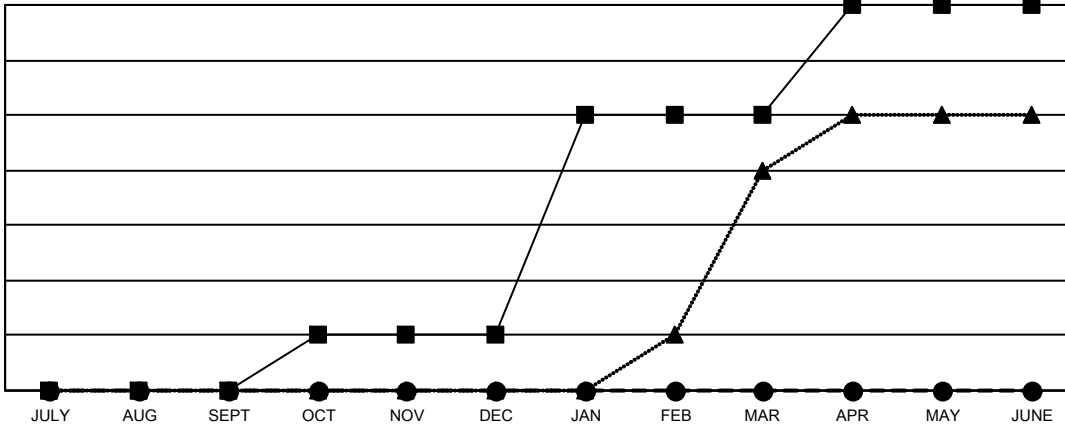
Multiple District 202

LOCATION: NEW ZEALAND

Clubs			
RESULTS FOR 2021-2022			
QUARTER	NEW CLUB GOAL	NEW CLUBS	DROPPED CLUBS
JULY/AUG/SEPT	0	0	4
OCT/NOV/DEC	1	0	0
JAN/FEB/MAR	4	0	0
APR/MAY/JUNE	2	0	0

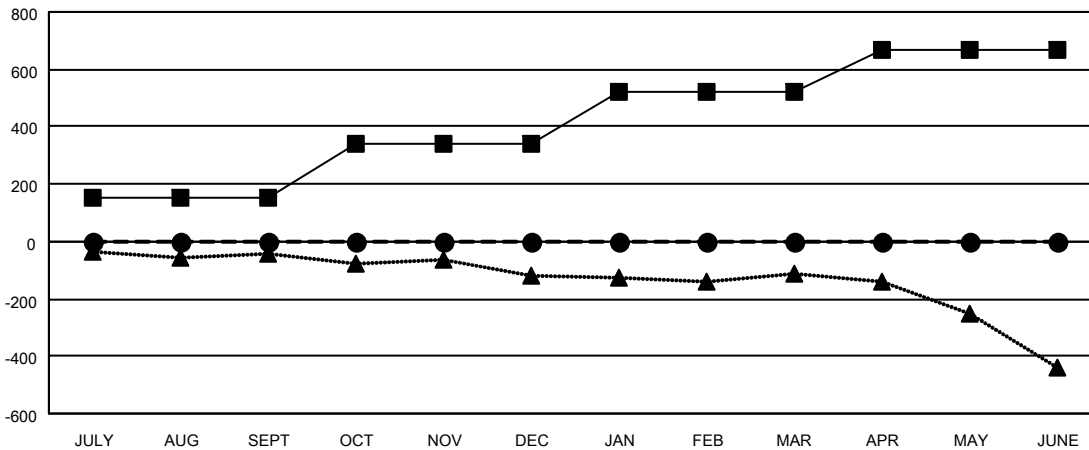
Members			
RESULTS FOR 2021-2022			
QUARTER	MEMBER GROWTH NET GOAL	MEMBER GROWTH ACTUAL	DROPPED MEMBERS ACTUAL (including transfers)
JULY/AUG/SEPT	154	84	64
OCT/NOV/DEC	185	0	0
JAN/FEB/MAR	181	0	0
APR/MAY/JUNE	146	0	0

GOALS AND ACTUAL NEW CLUBS CUMULATIVE



- - CURRENT YEAR GOALS FOR NEW CLUBS
- - CURRENT YEAR ACTUAL NEW CLUBS
- ▲ - LAST YEAR ACTUAL NEW CLUBS

GOALS AND ACTUAL MEMBERS CUMULATIVE



- - MEMBER GROWTH NET GOAL
- - MEMBER GROWTH ACTUAL
- ▲ - LAST YEAR MEMBERSHIP ACTUAL

DROPPED CLUBS: 4	
<u>DROPPED MEMBERS</u>	
DECEASED	10
CLUB CANCELLED	0
OTHER	54
<b>TOTAL</b>	<b>64</b>

44 CLUBS OF 323 ADDED 1 OR MORE NEW MEMBERS

[CLICK HERE FOR CUMULATIVE MEMBERSHIP DATA](#)

<u>GENDER DISTRIBUTION</u>	
MALE	5,774 (68.23%)
FEMALE	2,688 (31.77%)
TOTAL FAMILY UNIT MEMBERS	746
FAMILY MEMBERS PAYING HALF DUES	377